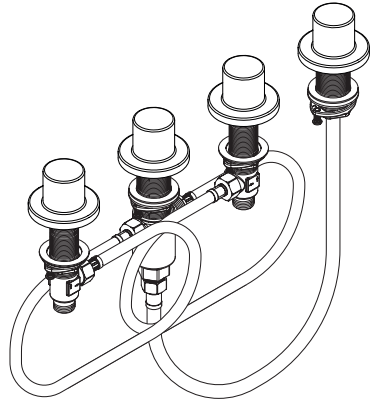


ZH 用户手册 / 组装说明

2

EN Instructions for use / Assembly instructions

2



Basic set
13239187

**安全技巧**

- △ 装配时为避免挤压和切割受伤, 必须戴上手套.
- △ 冷热水管间过大的压力差必须予以平衡.

安装提示

- 安装前必须检查产品是否受到运输损害. 安装后将不认可运输损害或表面损伤.
- 管道和阀门必须根据通用标准进行安装, 冲洗和检查.
- 请遵守当地国家现行的安装规定.
- 所安装的面盆龙头必须使得所有构件随时可接触到并且在需要时可以进行更换. 为确保穿透软管套管的水不会造成损失, 必须防止该区域漏水.
- 注意! 每年必须进行一次密封性检查.
- 连接管线 G 1/2: 左热右冷
- 该产品专为饮用水设计!

符号说明

请勿使用含有乙酸的硅胶!



大小 (参见第页 5)



备用零件 (参见第页 6)

选装附件 (不在供货范围内)



- Secuflex 盒子 #28389000 (参见第页 6)

Safety Notes

- △ Gloves should be worn during installation to prevent crushing and cutting injuries.
- △ The hot and cold supplies must be of equal pressures.

Installation Instructions

- Prior to installation, inspect the product for transport damages. After it has been installed, no transport or surface damage will be honoured.
- The pipes and the fixture must be installed, flushed and tested as per the applicable standards.
- The plumbing codes applicable in the respective countries must be observed.
- When installing the bath fitting set, it must be guaranteed that all the parts are easily accessible and can be removed if necessary. To avoid damage by water penetrating through the hose bushing or through any defects in the shower hose under the tub, this area must be protected against leaking water.
- Important! Do a leak test once a year.
- Connections G 1/2: cold right - hot left
- The product is exclusively designed for drinking water!

Symbol description

Do not use silicone containing acetic acid!



Dimensions (see page 5)

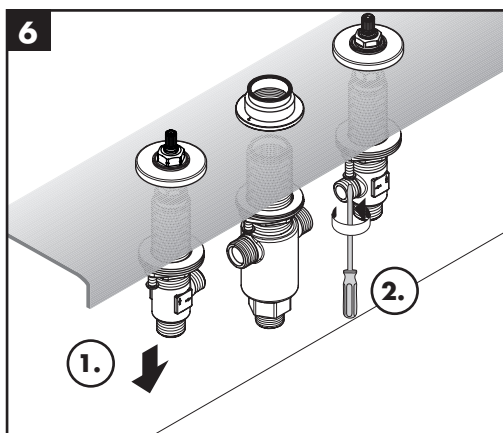
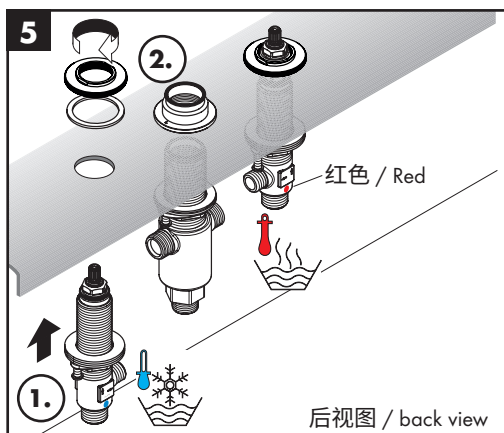
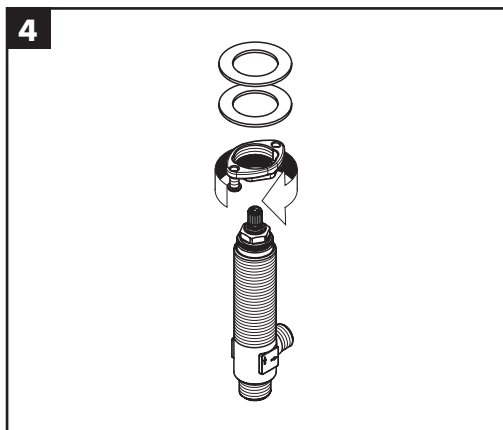
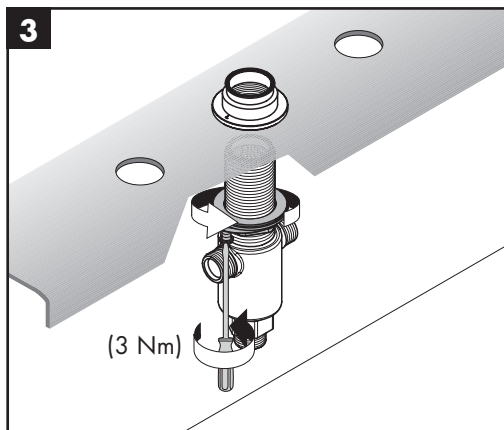
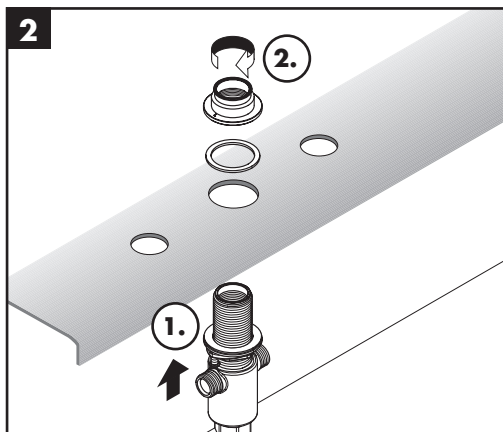
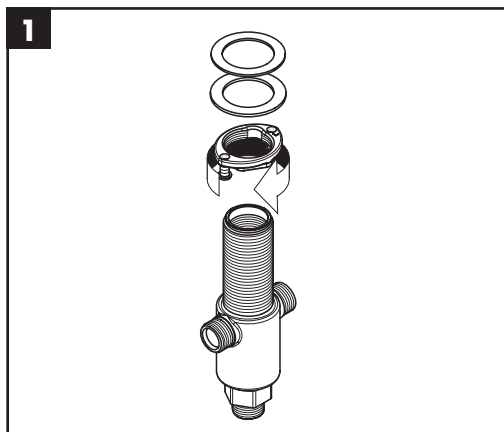


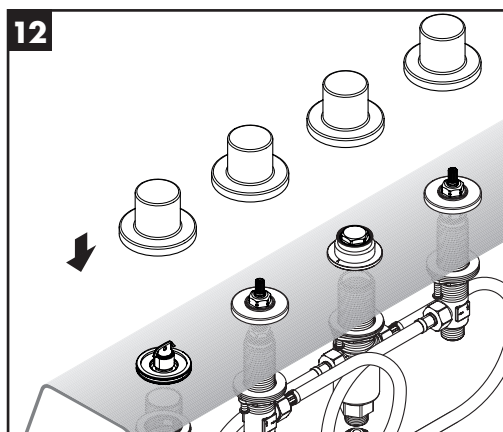
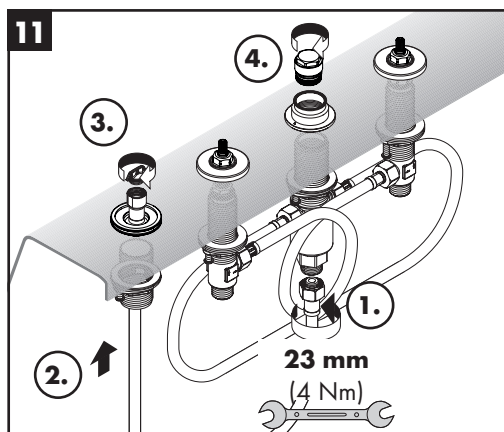
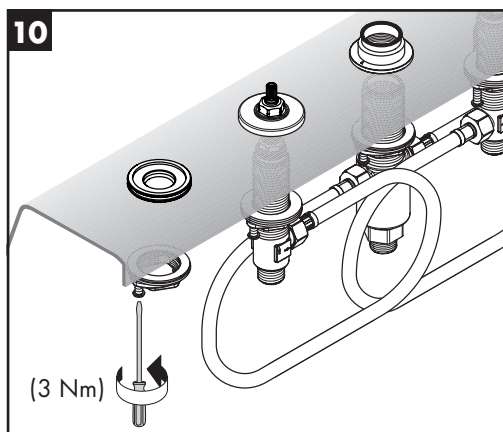
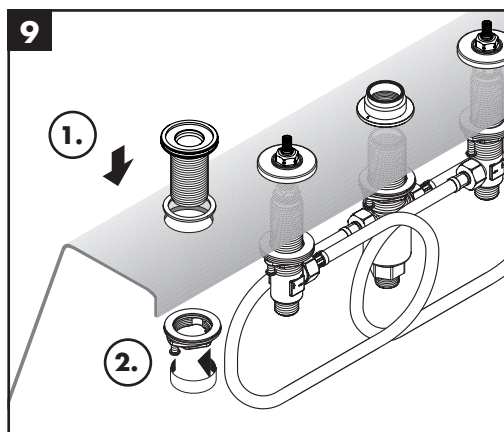
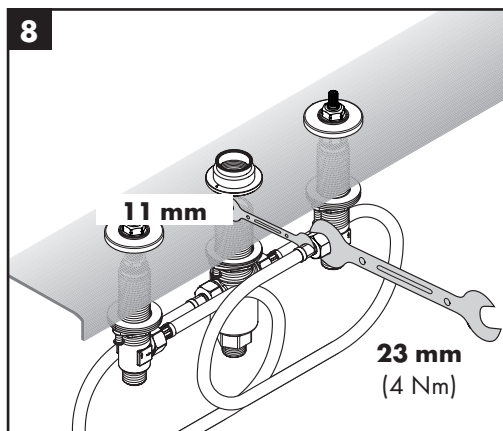
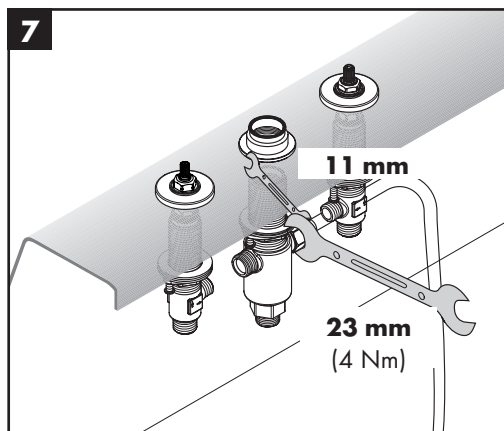
Spare parts (see page 6)

Special accessories (order as an extra)



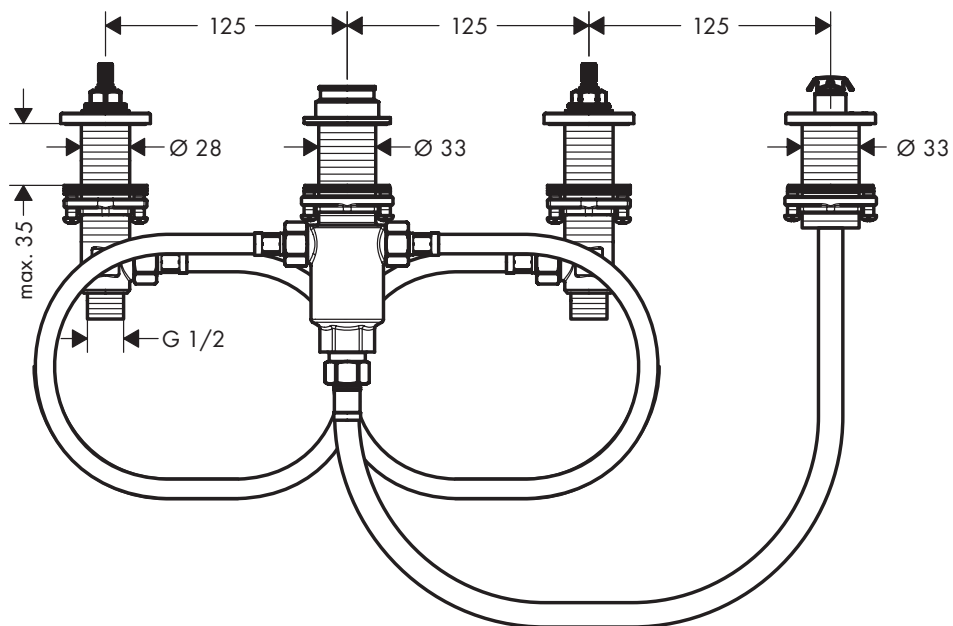
- Secuflex Box #28389000 (see page 6)



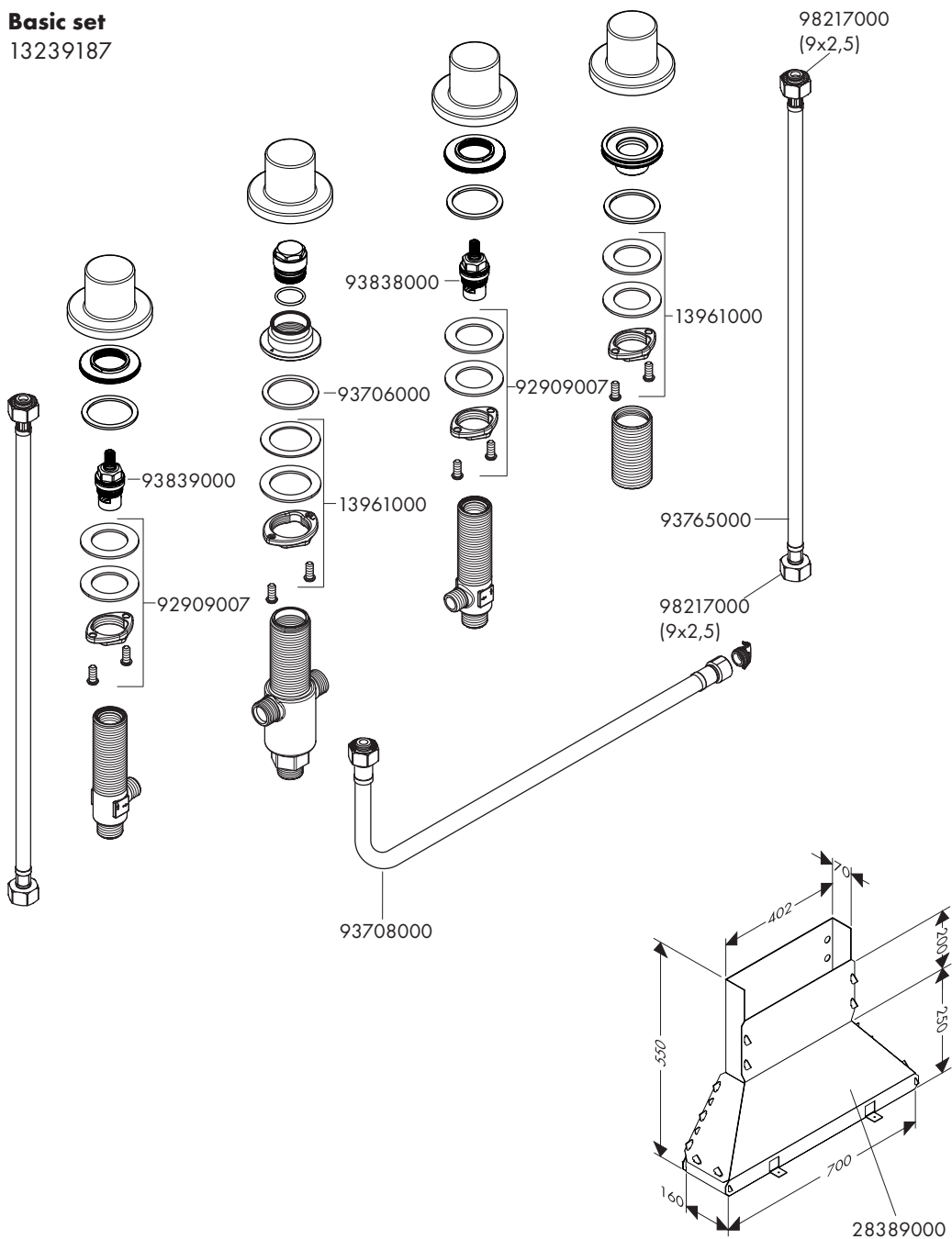




Basic set
13239187



Basic set
13239187



The Hansgrohe logo, consisting of the word "hansgrohe" in a white, lowercase, sans-serif font, centered within a solid black rectangular background.

Hansgrohe · Auestraße 5 · 9 · D-77761 Schiltach · Telefon +49 (0) 78 36/51-1282 · Telefax +49 (0) 7836/511440
E-Mail: info@hansgrohe.com · Internet: www.hansgrohe.com

12/2024
9.01705.51